



Infinity Table

Table with round base in chromed or lacquered steel. Glass, melamine, crystalceramic top available in different sizes.

Top ø120 available only in melamine, glass and crystalceramic marble calacatta.



Colors and Materials

Structure



White Steel



Black Steel



Sand Steel



Brown Steel



Grafite Steel

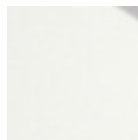


Chrome

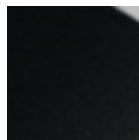
Coating



Melamine
8 Colors



White hpl black core



Black hpl



Hpl Cemento



Hpl Corten



Transparent Glass



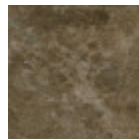
Lead Crystalceramic



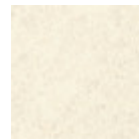
Charcoal Savoia
Crystalceramic



Cement Savoia
Crystalceramic



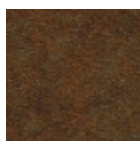
Emperador Marble
Crystalceramic



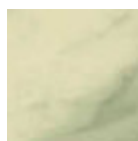
Oxide White
Crystalceramic



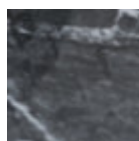
Oxide Sand
Crystalceramic



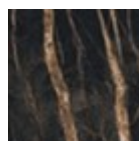
Corten
Crystalceramic



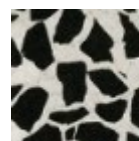
Crystalceramic with
effect calacatta
marble



Crystalceramic
Glossy Black Greek
Marble



Crystalceramic with
effect noir desir
marble



Venetian
crystalceramic

Dimensions

Dimensions

Volumetric Details

Weight 44 Kg

Volume 0.25 mc

Package 2

Image not found or type unknown

	A (cm) (inch)	B (cm) (inch)	C (cm) (inch)
ø60 (cm) (inch)	76 29.9	60 23.6	60 23.6
ø70 (cm) (inch)	76 29.9	70 27.6	70 27.6
ø80 (cm) (inch)	76 29.9	80 31.5	80 31.5
ø100 (cm) (inch)	76 29.9	100 39.4	100 39.4
ø120 (cm) (inch)	76 29.9	120 47.2	120 47.2